

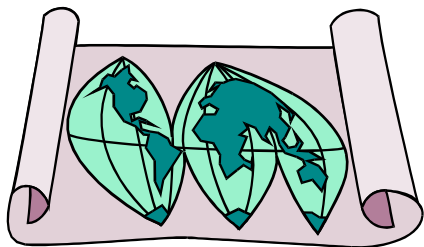
Why should I seek an ELL Endorsement?

No Child Left Behind legislation requires that every school district

- assess Limited English Proficient students and
- demonstrate that these students are making adequate, yearly progress.

According to the 2000 Census,

- More than 2 million children nationwide are identified as limited English proficient students—children who need additional language skills to succeed in English-only classrooms.
- 8.2% of all K-12 enrollment in North Dakota are Limited English Proficient students (8,748 students).



Our Communities and Schools are becoming more Culturally Diverse.

How to Contact Us:

By Telephone...

Division of Communication Arts
And Social Science

1-800-532-8641, extension
37310

By Email...

Ms. Joan Aus,
ELL Program Coordinator
joan.aus@vcsu.edu

Dr. Margaret Dahlberg,
Communication Arts Dept. Chair
margaret.dahlberg@vcsu.edu

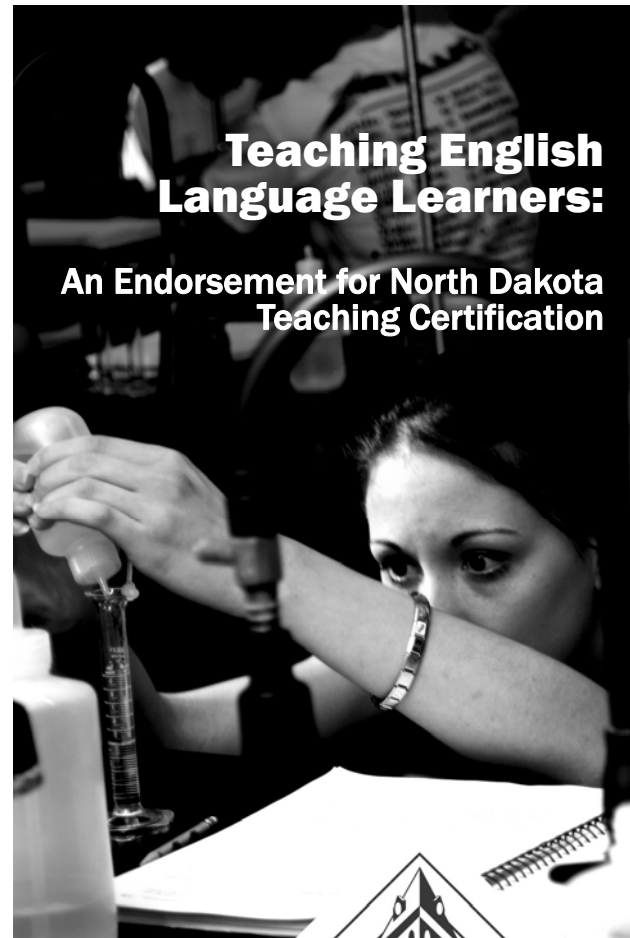


VCSU

Valley City State University
Valley City, ND 58072

Teaching English Language Learners:

An Endorsement for North Dakota Teaching Certification



VALLEY CITY
STATE UNIVERSITY





ESPB Requirements

The ELL Endorsement/Minor at Valley City State University follows the Endorsement requirements specified by the North Dakota Education Standards and Practices Board:

1. **Foundations (4 semester hrs)**
 - Educ 283 Cultural Diversity
 - Eng 361 Foundations of Bilingual/Multicultural Education
2. **Linguistics (6 semester hrs)**
 - Engl 309 Linguistics and Language Acquisition
 - Engl 409 Language and Culture
3. **Methods (2 semester hrs)**
 - Engl 390 Methods of Teaching ESL
4. **Assessment (2 semester hrs)**
 - Engl 363 Assessing ESL Proficiency
5. **Field Experience (2 semester hrs)**
 - Engl 464 ELL Practicum

Course Descriptions

English 309: Linguistics/Language Acquisition

This study of linguistics focuses on the nature of language, organization principles of language, principles of language change, and the psycholinguistic theories of first and second language acquisition.

English 361: Foundations of Bilingual and Multicultural Education

This course examines models of bilingual education, research on the effectiveness of bilingual education, its history, and significant laws and court decisions affecting language minority students.

English 363: Assessing ESL Proficiency

An examination of the assessment and testing of culturally diverse students, which involves a study of culturally appropriate assessment tools and methods of identifying and assessing limited English.

English 390: Methods of Teaching ESL

A study of the methods, materials and trends in teaching English language learners

English 409: Language and Culture

This course examines the basic sociocultural variables in the acquisition process of first and second languages, including language learning theories, types of bilingual and multilingual education situations, and social determinants of dialect and style.

English 464: ESL Practicum

Provides a practicum experience in an ESL setting. Students will observe, teach, and work closely with students from diverse primary language backgrounds.

Educ 283: Cultural Diversity

A multicultural study of the cultural, ethnic, linguistic, and developmental differences of students in the classroom. Traditional and modern Native American cultures and values with an emphasis on North Dakota Native Americans. Strategies for teaching and assessing diverse cultural populations.

Online Course Schedule

All courses are offered in a convenient, **online** or workshop format; students can complete the endorsement in a four semester sequence:

Even Summers: Engl 309 and 361

Every Fall: Engl 363

Every Spring: Engl 390

Odd Summers: Engl 409

Every Semester: Ed 283; Engl 464

Students who have completed prior coursework in linguistics and cultural diversity should contact the ELL Coordinator for a transcript review.

